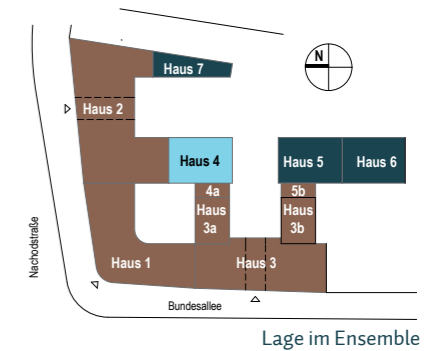


# MOMENTE BERLIN

Mehr als ein Zuhause

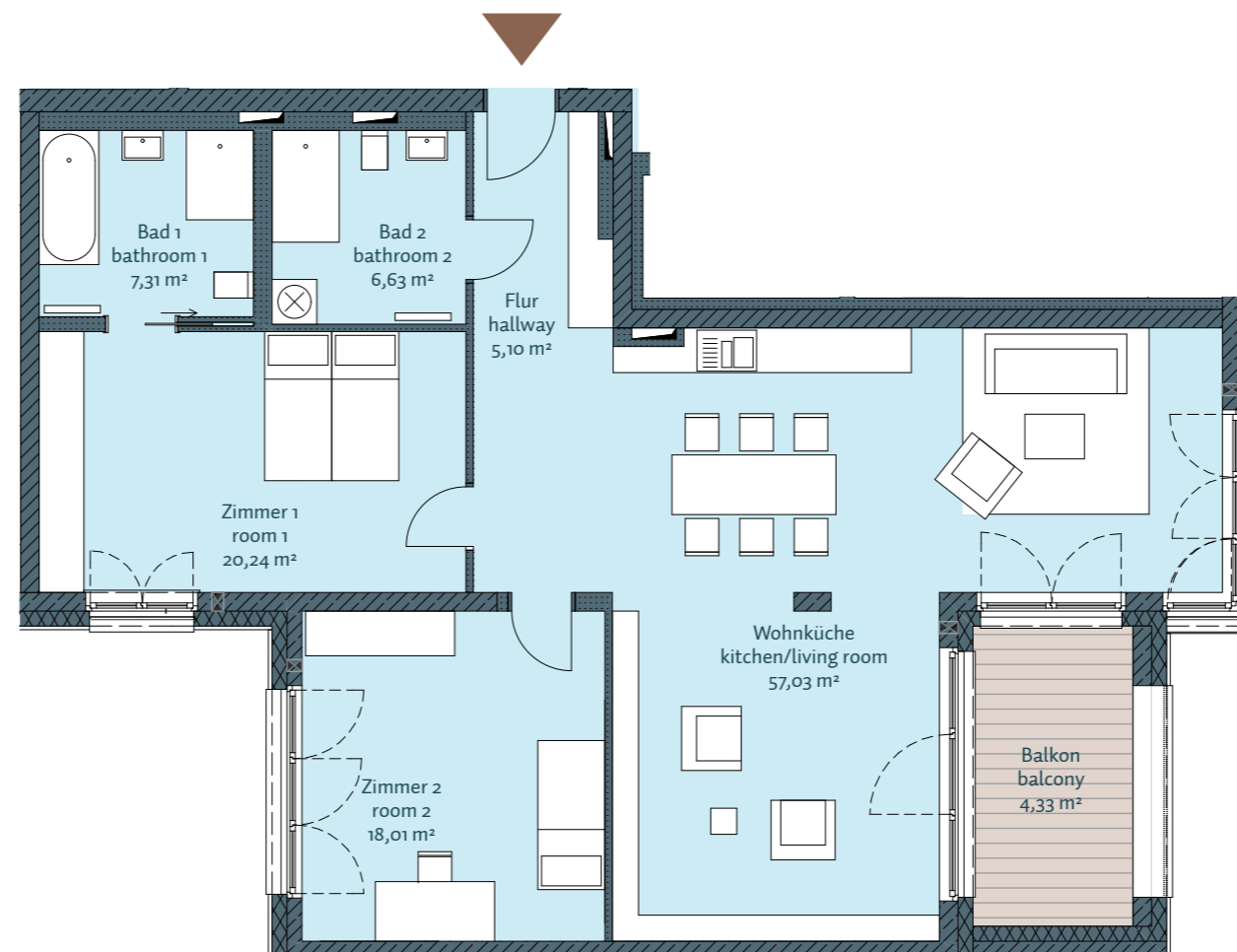
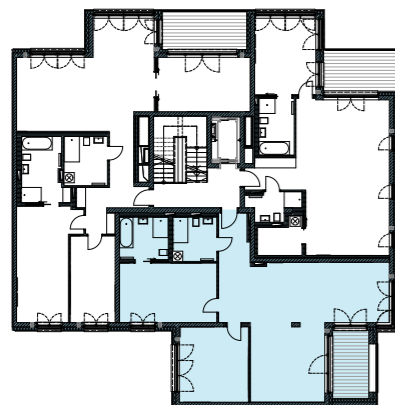


## H4 - WE 02

1. Obergeschoss, 3 Zimmer, 118,65 m<sup>2</sup> (barrierefrei)

Bad 1 /// bathroom 1	7,31 m <sup>2</sup>
Bad 2 /// bathroom 2	6,63 m <sup>2</sup>
Balkon 50% /// balcony 50%	4,33 m <sup>2</sup>
Flur /// hallway	5,10 m <sup>2</sup>
Wohnküche /// kitchen/living room	57,03 m <sup>2</sup>
Zimmer 1 /// room 1	20,24 m <sup>2</sup>
Zimmer 2 /// room 2	18,01 m <sup>2</sup>
<b>Gesamt /// total</b>	<b>118,65 m<sup>2</sup></b>

Lage im Geschoss



Auf A3 Maßstab: 1:100