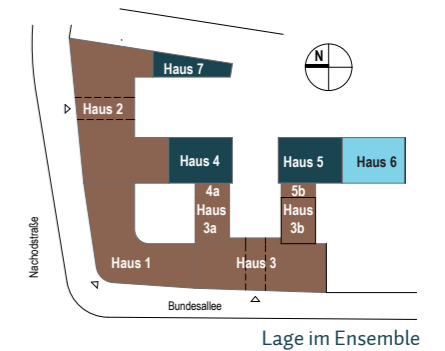


# MOMENTE BERLIN

Mehr als ein Zuhause



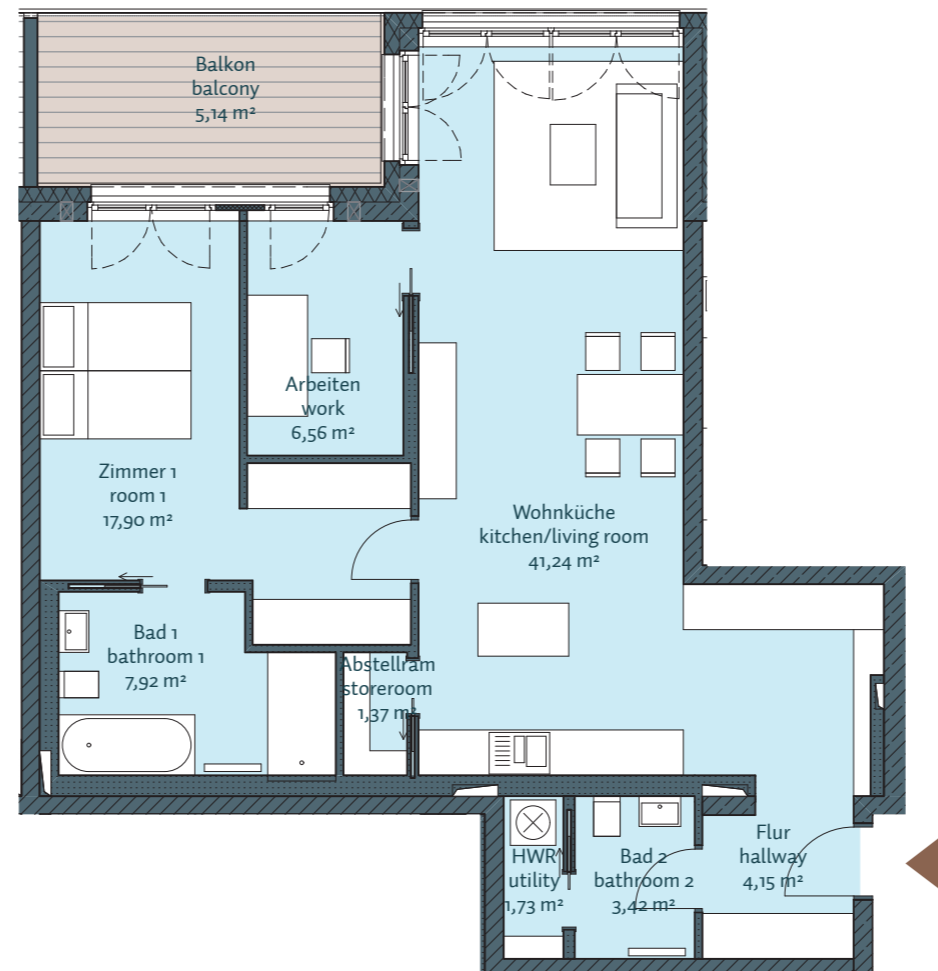
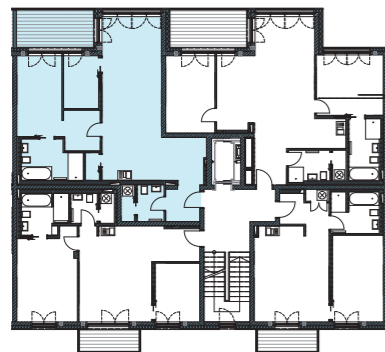
## H6 - WE 11

2. Obergeschoss, 2,5 Zimmer, 89,43 m<sup>2</sup>

|                                   |                      |
|-----------------------------------|----------------------|
| Abstellraum /// storeroom         | 1,37 m <sup>2</sup>  |
| Arbeiten /// work                 | 6,56 m <sup>2</sup>  |
| Bad 1 /// bathroom 1              | 7,92 m <sup>2</sup>  |
| Bad 2 /// bathroom 2              | 3,42 m <sup>2</sup>  |
| Balkon 50% /// balcony 50%        | 5,14 m <sup>2</sup>  |
| Flur /// hallway                  | 4,15 m <sup>2</sup>  |
| HWR /// utility                   | 1,73 m <sup>2</sup>  |
| Wohnküche /// kitchen/living room | 41,24 m <sup>2</sup> |
| Zimmer 1 /// room 1               | 17,90 m <sup>2</sup> |

**Gesamt /// total** 89,43 m<sup>2</sup>

Lage im Geschoss



Auf A3 Maßstab: 1:100